



In This Issue:



The Mega Transport Experts

- > The Shipyard | Dry Dock Module Project
- > The Shipyard | Pilot Boat Launch
- > Spotlight On Safety | Back Injury Prevention

The Shipyard Dry Dock Module Project



Job Specs

Weight:
1,768 Tons

Dimensions:
94'L x 157'W

Equipment Used:

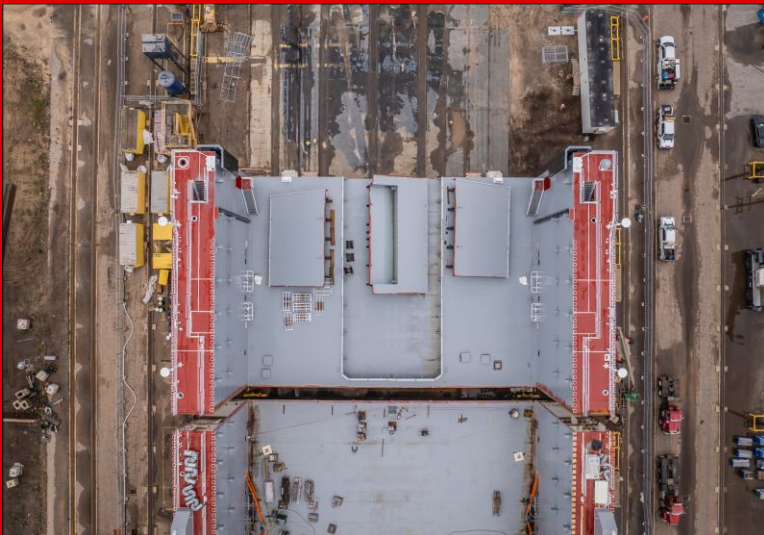
64 axle lines of Scheuerle SPMTs, 4 power packs, barge ramps, crane mats, high volume water pumps and winch trucks

Berard played a pivotal role in helping an Alabama shipyard bring a massive dry-dock construction project to life by delivering the heavy transport expertise required to safely move some of the largest modular components ever built for the facility. The dry-dock itself was assembled from enormous prefabricated modules—each weighing approximately 1,768 tons—that were constructed simultaneously at two separate shipyards: one in Mobile, Alabama, and the other at a major shipyard in Amelia, Louisiana. Coordinating such a split-site build demanded absolute precision, and that's where Berard's load-out and off-load capabilities became essential.

Our team engineered and executed the transport of these colossal structures from fabrication yards to the water, using specialized equipment and carefully choreographed procedures to ensure stability, alignment, and safety at every stage. Once the modules reached their destination, Berard handled the off-load operations with the same level of technical discipline, positioning each piece so the shipyard could begin final assembly without delay. By bridging the gap between two states, two shipyards, and thousands of tons of steel, Berard effectively enabled the project to move forward on schedule and set the foundation for a dry dock built to handle some of the most demanding marine operations on the Gulf Coast. Once the dry dock construction is complete, Berard will load out the entire dry dock onto a larger dry dock for launching.







The Shipyard Pilot Boat Launch



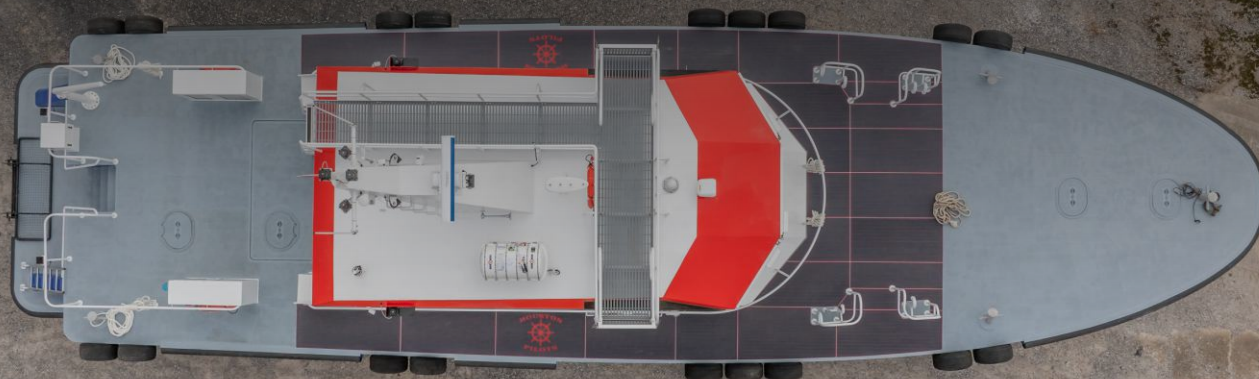
Job Specs

Weight:
120,000 lbs.

Dimensions:
80'L x 20'W

Equipment Used:
6 axle lines of Scheuerle SPMTs
and 1 power pack

Berard helped a South Louisiana shipyard successfully launch an 80' x 20', 120,000-pound pilot boat into the Bayou Teche. Using six axle lines of SPMTs, Berard carefully lifted and supported the vessel, ensuring even weight distribution and absolute stability as it transitioned from the fabrication shop to the launch ramp. The team navigated the tight confines of the shipyard and transported the vessel to the boat ramp. Air bags were then installed under the vessel and the SPMTs were removed. Once ready, the vessel began the final trip down the ramp and into the water for the first time. Berard has been helping shipyards of all sizes stay on schedule for decades and has become a trusted vendor to many throughout the nation.





Save your Back! Back Injury Prevention

Back-injury safety starts with understanding how easily the body can be pushed past its limits when lifting, carrying, or handling heavy or awkward loads. Most back injuries happen not because of one dramatic moment, but from repeated strain, poor posture, or lifting with the wrong technique. Protecting yourself means keeping the spine in a neutral position, bending at the knees instead of the waist, and letting the legs—not the back—do the work. It also means avoiding twisting while lifting, keeping objects close to the body, and asking for help or using mechanical assistance when something is too heavy or bulky to manage alone. Good housekeeping, clear walkways, and planning the lift before you start all reduce the risk of sudden slips or awkward movements. Ultimately, back-injury prevention is about respecting your body's limits, working smart instead of hard, and making safe lifting habits part of every task.

Workplace Back Injuries

41%
OF ERGONOMIC
INJURY CASES ARE
BACK INJURIES

80%
OF ADULTS ARE
ESTIMATED TO
EXPERIENCE
A BACK INJURY

\$50B
SPENT EACH
YEAR FIGHT-
ING BACK PAIN

2nd
MOST COMMON
REASON FOR A
DOCTORS VISIT IS
BACK PAIN

80%
OF BACK INJURIES
ARE CAUSED BY
IMPROPER LIFTING

24%
ALL DAYS MISSED
FROM WORK
ARE DUE TO
BACK INJURIES



> Birthdays @ Berard

Happy Birthday!

Happy Birthday To These Dedicated Team Members!

Jacques Beinvenu
George Broussard
Roy Courville
† Rogers Courville

Larry Covington
Jordan Doucet
Clarence Romero
Anthony Tausin