



In This Issue:

BERARD
SINCE
1945

The Mega Transport Experts

- > The Final One | EPF Lansing Load Out & Transfer
- > The Shipyard | T-ATS Load Out & Transfer
- > Team Member Spotlight | Nicholas Bouchereau

The Final One

EPF Lansing Load Out & Transfer



Job Specs

Weight: 2,200 Tons

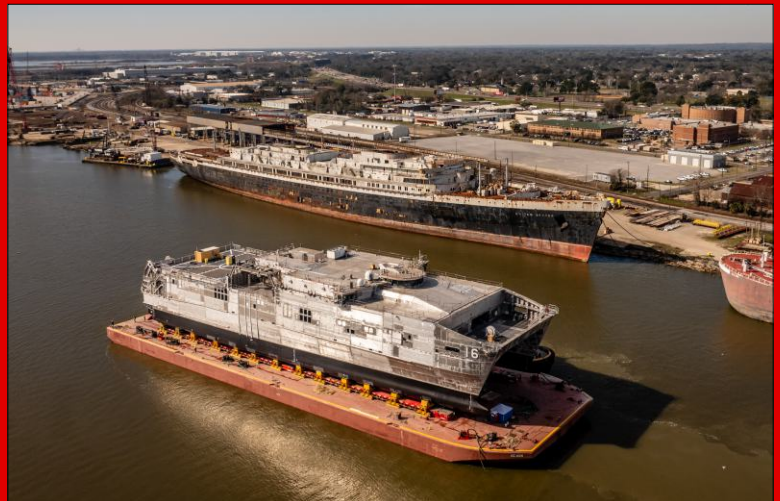
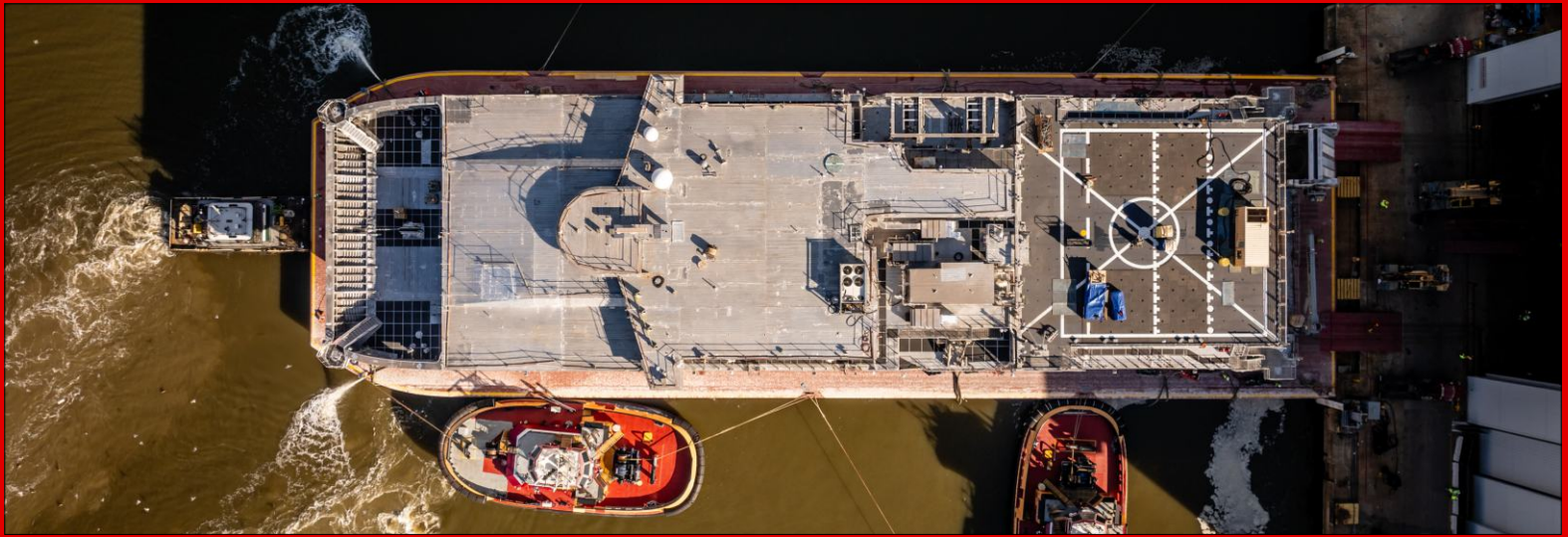
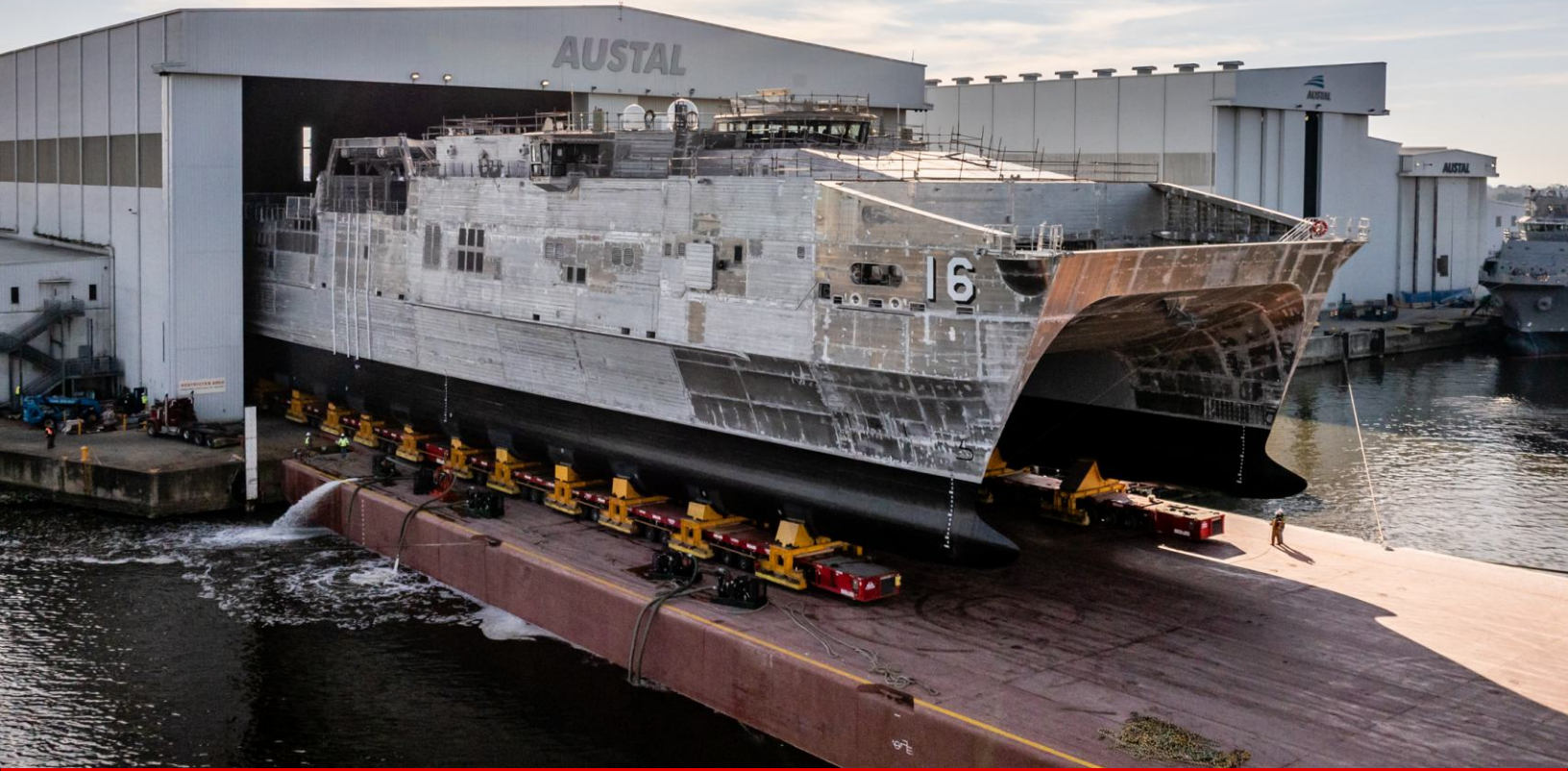
Dimensions:

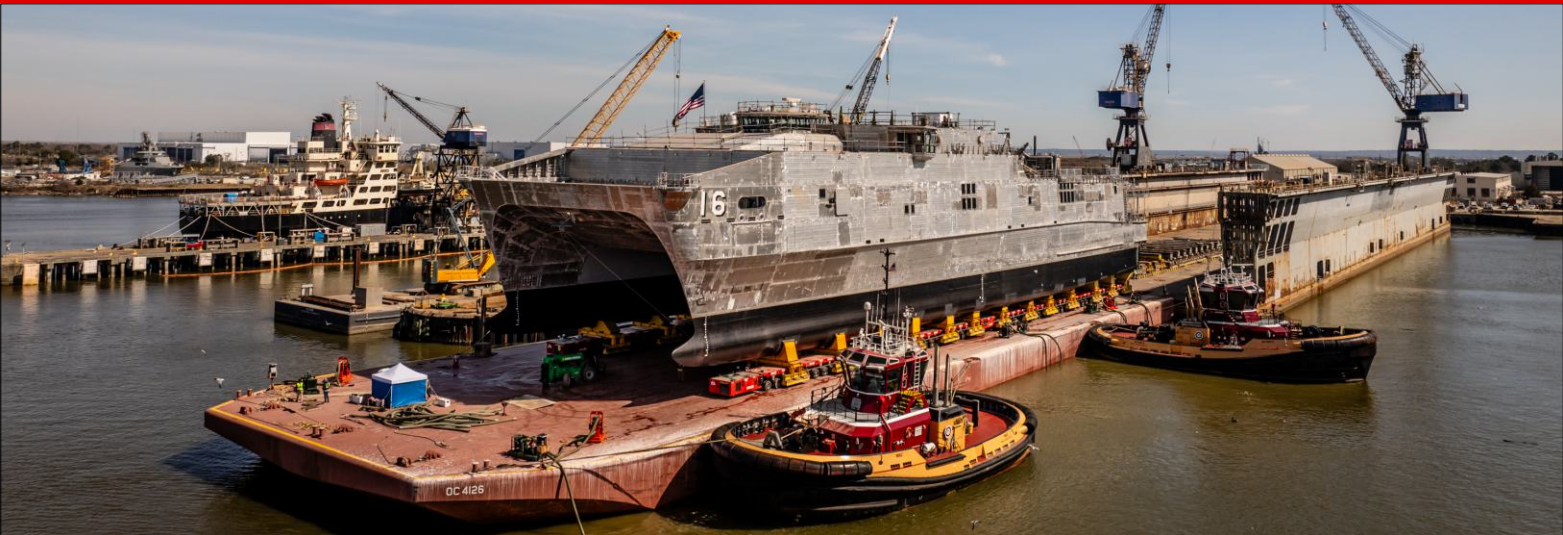
338'L x 94'W x 105'H

Equipment Used: 112 axle lines of SPMTs, 4 power packs, loading ramps, high volume water pumps and winches for barge securement

The Berard team had the honor of launching the last EPF for Austal USA in Mobile, Alabama. The team loaded out EPF 16, the USNS Lansing, a 2,200-ton Expeditionary Fast Transport ship (EPF). The team transported the 338' long ship from the client's final assembly bay to a deck barge. Once secured on the barge, it traveled down river to be trans-loaded. Once at the transfer point, the trans-loading of the vessel onto the floating dry dock began. The trans-load went smoothly, thanks to all involved. With the team's dedication and hard work, the job was completed safely and successfully in only one day.







The Shipyard T-ATS Load Out & Transfer



Job Specs

Weight:

3,670 Tons

Dimensions:

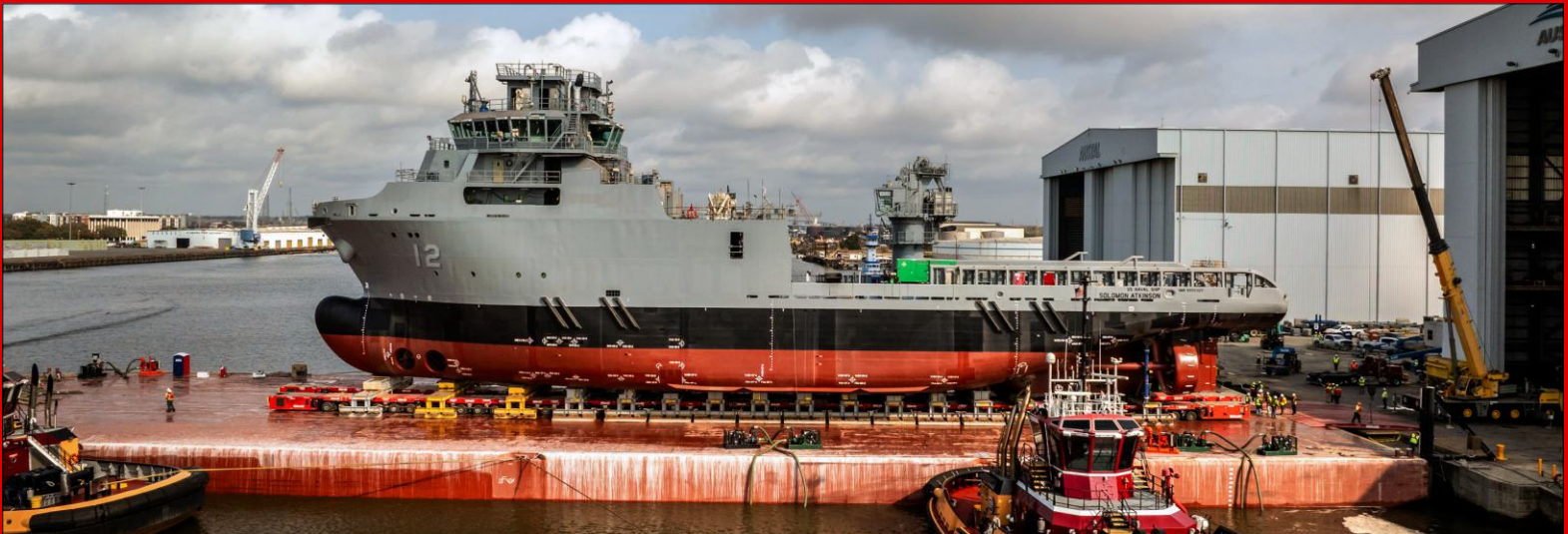
256'L x 59'W

Equipment Used:

106 axle lines of Scheuerle SPMTs, 4 power packs, barge ramps, high volume water pumps and winch trucks.

Berard was proud to assist Austal USA with the launch of the USNS Solomon Atkinson, a T-ATS vessel weighing in at 3,670 tons and measuring 256' in length and 59' in width. The Berard team developed a lift and load out plan to first lift the vessel from its supports and move the vessel from the final assembly bay to the bulkhead. A ballast plan was then executed and the vessel was slowly rolled onto the deck barge and into final position for its marine transport to a dry dock one mile down river for trans-loading. Now at the dry dock, the team worked closely with ballast operators to begin the trans-load process onto the 800' long dry dock and into position where the team lowered the vessel onto pre-positioned supports. The Berard team would like to congratulate and thank everyone on our team and everyone at Austal for entrusting us as their long term mega transport provider.







Nicholas Bouchereau

Driver | Rigger | SPMT Operator



Joining the Berard team in April of 2023, Nicholas Bouchereau has certainly become a valued member of the team. He's a man of many talents and serves the team as driver, rigger as well as a SPMT operator. Nick commented, "The job is very unique. We travel, see places and move things that most people never see. It's very rewarding. I enjoy working at Berard. I work with a very good group of guys and very knowledgeable foreman and supervisors."

In his spare time he enjoys hunting, fishing and cooking. He is married to Brittani Bouchereau and they have 3 daughters Blake, Maddie and Collette and a dog named Hank.



> Birthdays @ Berard

*Happy
Birthday!*

Happy Birthday to These Dedicated Team Members!

Baron Berard
Kennedi Angelle
Kevin Bienvenu
Dillon Bouchereau
Ray Breaux
Ashton Duplantis

Spencer Freyou
Vicki Pellerin
Kelsey Pelous
Sloane Simoneaux
Joel Thibodeaux
Karl Vann