



In This Issue:

BERARD
SINCE
1945

The Mega Transport Experts

- ▶ Big Blue Crane 70 | Seattle Arrival & Offload
- ▶ Power Up! | Transformer Project
- ▶ Team Member Spotlight | Dillon Bouchereau
- ▶ Play Ball! | Loreauville Middle School Tigers

Big Blue Crane 70 Seattle Arrival & Offload



Job Specs

Weight:

1,100 Tons

Dimensions:

197'L x 45' W x 155'H

Equipment Used:

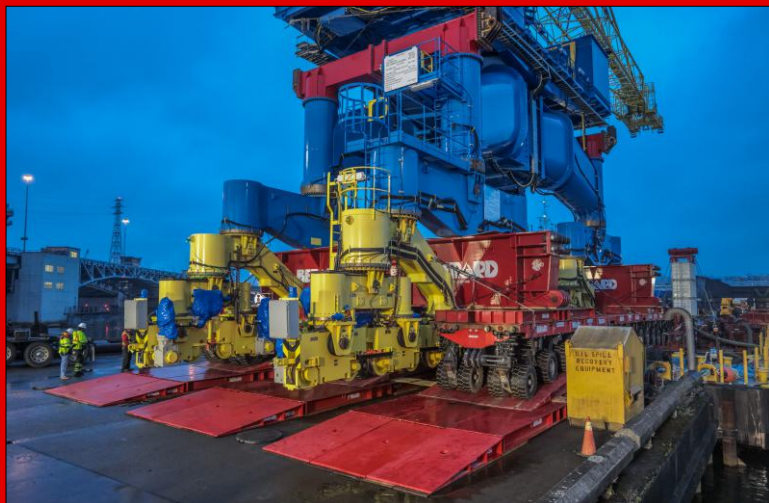
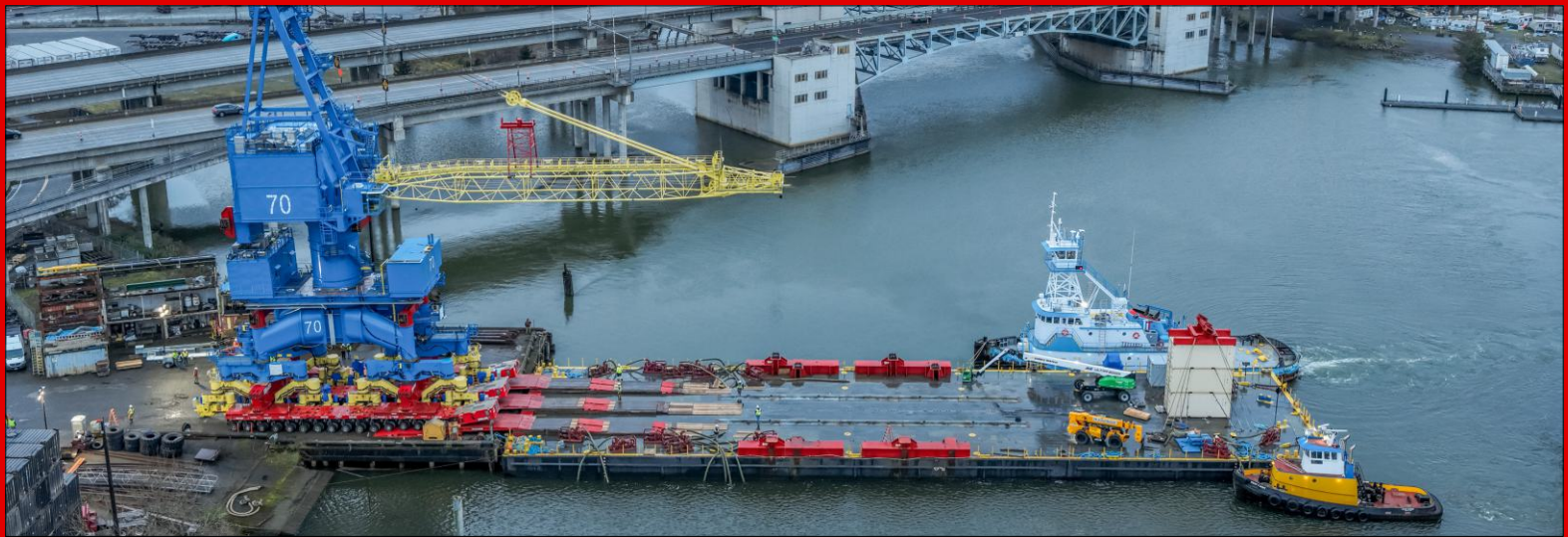
48 axle lines of SPMTs, 3 power packs, Berard MBS (Modular Beam System), 260' x 72'W deck barge, loading ramps, crane mats and winch trucks

After months of transiting the Great Lakes, Atlantic and Pacific oceans, and the Panama Canal, Big Blue Crane 70 has arrived in Seattle.

The crane originated in Manitowoc, Wisconsin where the team loaded out, secured and marine transported this 1,100 ton crane destined for Bremerton, Washington State where it will be offloaded to rail at a future date. Berard engineers developed a turnkey load out and ballast plan as well as the sea-fastening design and installation for the 8,842 nautical mile marine transit which sailed through two foreign waterways on its way to the final location.

The Berard team provided a turnkey solution for this project. Our MBS (Modular Beam System) was deployed on this project and proved itself once again to be the right tool for the job. Thanks go out to our incredible team members who went above and beyond to ensure that Big Blue made it to the Pacific Northwest safe and sound.





Power Up! Transformer Project



Job Specs

Weight:

407,664 lbs.

Dimensions:

28'-5" L x 12'-4" W x 21'-2" H

Equipment Used:

12 axle lines of Goldhofer PST-SLE SPMTs, 2 power packs, 12-axle Faymonville ModulMAX trailer, prime mover, barge ramps, high volume water pumps and winch trucks.

Berard recently completed the transportation of four transformers weighing 407,000 pound each from the Port of New Orleans to Plaquemine, Louisiana, utilizing a fully integrated heavy haul solution. The units were initially loaded onto the 220' x 43' BTI 1945 deck barge, travelling up the Mississippi River then into a shallow inland waterway to the roll-off location. Upon arrival, 12 lines of Goldhofer PST-SLE SPMTs were deployed to discharge the transformers from the barge with precision.

The units were then transferred to a 12-axle Faymonville ModulMAX trailer, paired with a Kenworth C500 prime mover, for the final 5-mile over-the-road transport. This portion of the move required detailed route planning and coordination to safely navigate public roadways. The project highlights Berard's ability to execute complex, multi-modal transport operations with efficiency and reliability.





Dillon Bouchereau

Mechanic



Joining the Berard team in July of 2023, Dillon Bouchereau has certainly become a valued member of the team. Dillon is part of our talented equipment maintenance team and does a great job of keeping our fleet in tip top shape.

Dillon says, "I love the job and being able to travel to job sites around the country. I like the work flow and I'm always working on something different to test my skills."

On his off time, Dillon enjoys hunting, fishing and cooking.



> Birthdays @ Berard

Happy Birthday!

Happy Birthday to These Dedicated Team Members!

Brian Grow
David Hargraves
Jesse Pelous

Ethan Walet
Andre Romero
Kyle Thibodeaux

Jordan Tyler

Play Ball! Loreauville Middle School Tigers



Over the past four years, our Chief Operating Officer, Braedon Berard, has had the privilege of coaching a dedicated group of young athletes from 5th through 8th grade. What began as a team of young players has grown into a close knit group of young men, consistently advancing to the championship game the past three seasons, an accomplishment that reflects their hard work, growth, and teamwork. As they close out their final middle school season and prepare to take the next step into high school baseball, this moment marks both an ending and a beginning. While they move on to new challenges, Coach Berard's commitment to these players remains unchanged; he plans to continue supporting and encouraging them every step of the way.

This season also brought memorable experiences, including a trip to Baton Rouge, where the team watched the LSU Tigers take on Dartmouth and had the opportunity to meet Coach Jay Johnson, a national championship winning head coach, an inspiring moment these players will not soon forget. As a proud sponsor of the Loreauville Middle School Tigers, Berard celebrates not only their success on the field, but also the character, discipline, and camaraderie they have built along the journey. Coach Braedon could not be prouder of these young men, whose achievements reflect their character, teamwork, and the support of a community that has guided them every step of the way, and he looks forward to cheering them on as they embrace the exciting opportunities ahead.

